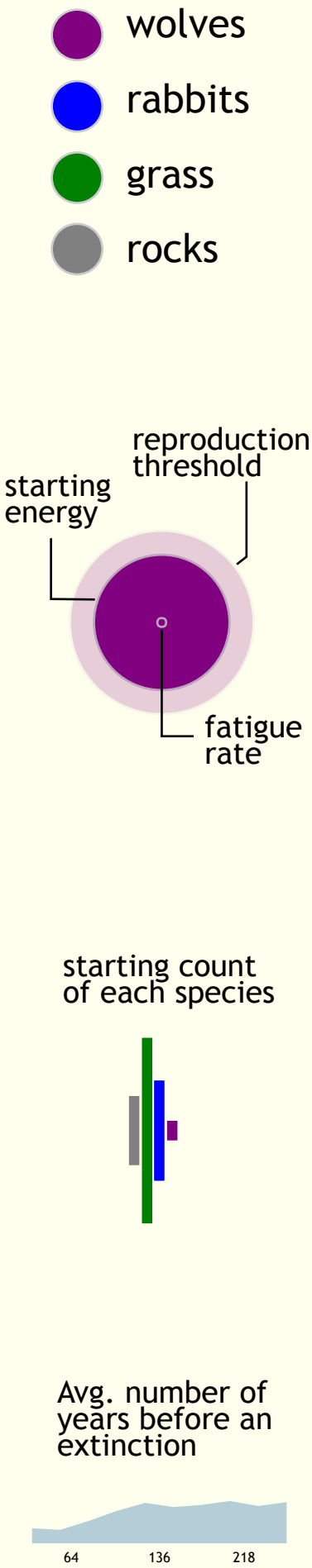
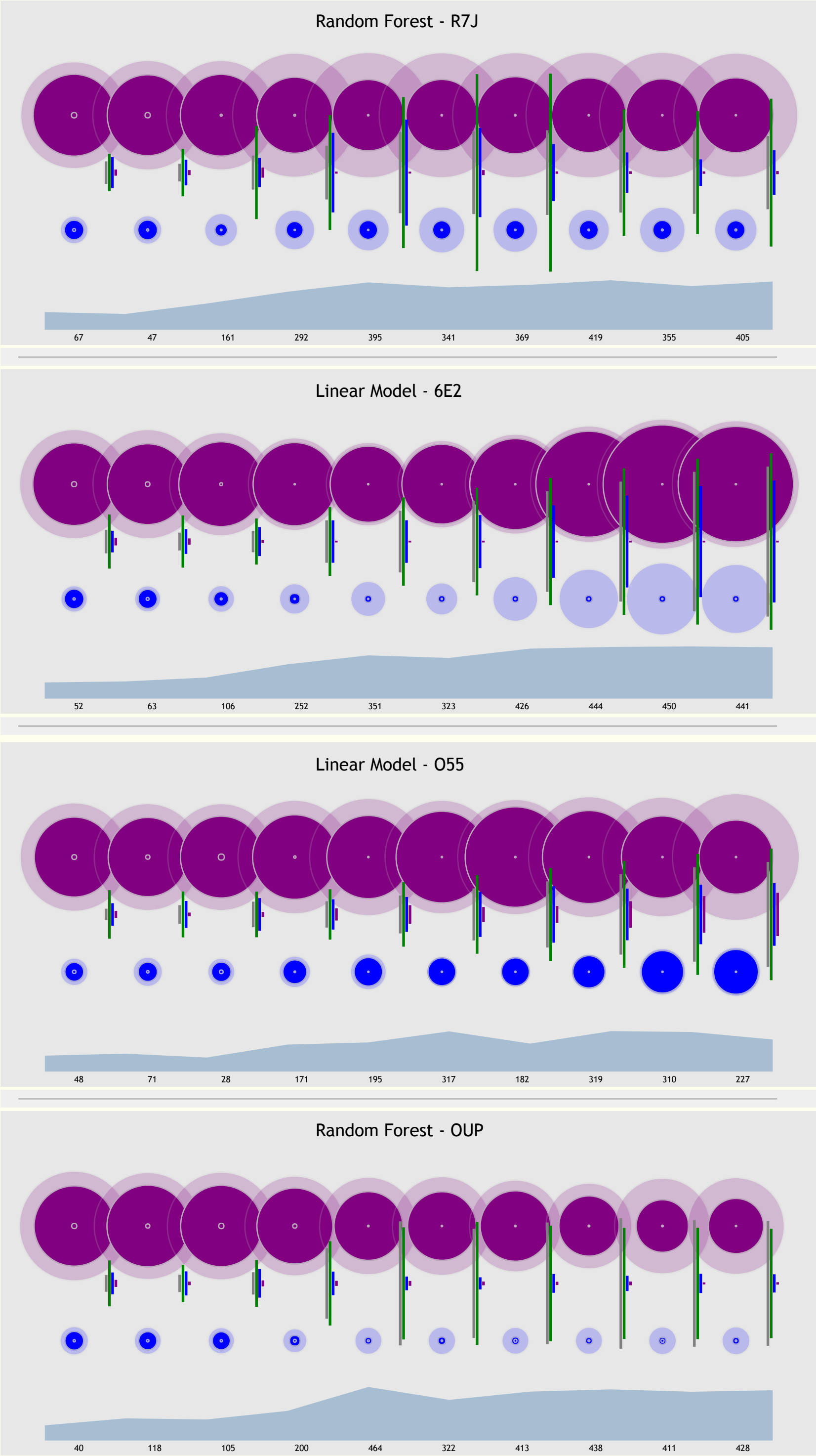


# bigValley

a simulated world where wolves and rabbits live out the eternal mortal drama. A world is initiated with random parameters. Then a machine learning algorithm attempts to optimize those parameters to find the most stable ecosystem.



Codes like R7J are identifiers of test simulations. A large number of tests were performed, only four of which are shown here.

A fundamental take-away is that there are varied solutions to a single problem. Different models find different balances of the parameters to achieve the same ideal stability.